

Creating profiles

Certificates storage Profiles are used for working with various certificates on one computer. After installation the program works with the default profile. To create a new profile, you need to:

1. select **SettingsProfile settings** (Fig. 1);

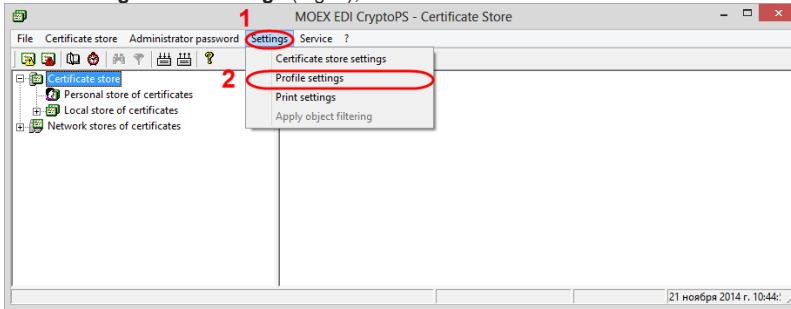


Fig. 1 – profile creation

2. click **Add** button (Fig. 2). As a result, the **Adding profile** window will open (Fig. 3).

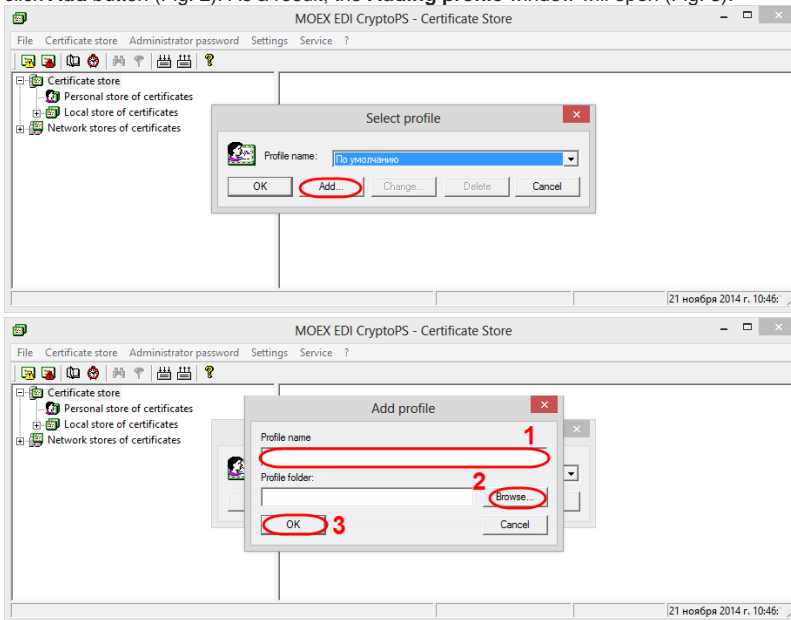


Fig. 2 – adding profile

Fig. 3 – saving profile

3. add the profile name in the **Name edit** field (Fig. 3.1), select a folder to place profile by using the **Select** button (Fig. 3.2) and click **OK** button (see Fig. 3.3) to save it.

As a result, when running the Certificate Storage the **Selecting profile** window will be displayed (Fig. 4).

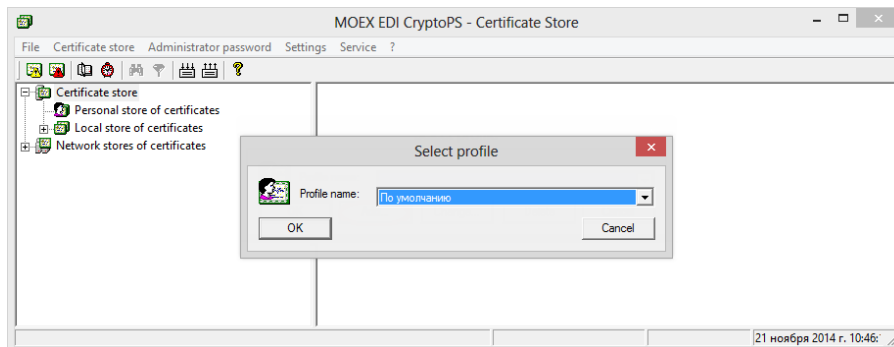


Fig. 4 – profile selection