

Running File Gateway

Running the Service via Console

Working with file gateway starts with running the **filegatewaysvc.exe** in the console without parameters. The service will run as a console program on behalf of the current user. Service log will be duplicated in the console. All the functionality of the service in this mode remains unchanged. The service running in the console can be stopped by pressing **Ctrl+C**.

Page contents:

- [Running the Service via Console](#)
- [Running the service as a Windows service](#)
 - [Start and stop through filegatewaysvc](#)
 - [Start and stop through services.msc](#)
- [Possible errors](#)

Before the initial start of the service, you must set the access to the HTTP -protocol. To do this:

1. enter in the search Windows box **cmd**;
2. run the command line as an administrator;
3. run the netsh http add urlacl url=http://+:PORT/ user=SERVICE_USER command, where:
 - a. **PORT** is a port number (default port is 8080). Parameter **/fileGateway/webInterface/@listenUrl** in the configuration file svc.config;
 - b. **SERVICE_USER** is the name of the user, on whose behalf the service is running.

Running the service as a Windows service

You can run the file gateway as a Windows service in two ways:

- by starting the filegatewaysvc application;
- through services.msc.

Start and stop through filegatewaysvc

To launch the file gateway:

1. enter **cmd** in the Windows search box;
2. launch the **cmd.exe** application that you found. This will open the Windows console;
3. go to the installation folder by running the **cd** command (for example, for default installation: **cd C:\Program Files\NSD.FileGateway**); run the **file gatewaysvc start** command.

To stop the service, go to the installation folder and run the filegatewaysvc stop command in the console.

Start and stop through services.msc

To start the file gateway as a Windows service:

1. enter **services.msc** in the Windows search box.
2. launch the **services.msc** application that you found . This will opens the **Service** window;

3. find the **NSD File Gateway (nsd_filegatesvc)** in the list (Fig. 1.1) and run the service (Fig. 1.2).

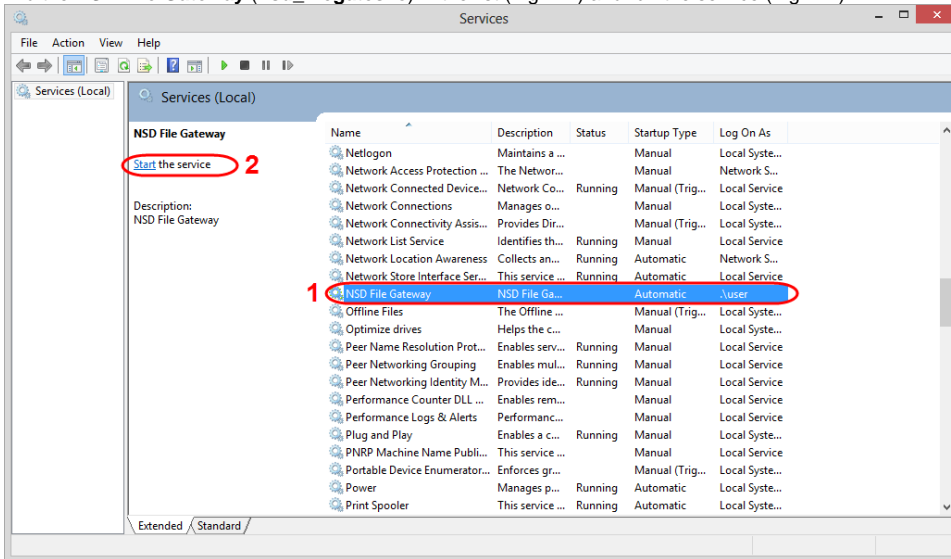


Figure 1 – running file gateway

Further management of the service – stopping and restarting – is also performed via **Service** (Fig. 2).

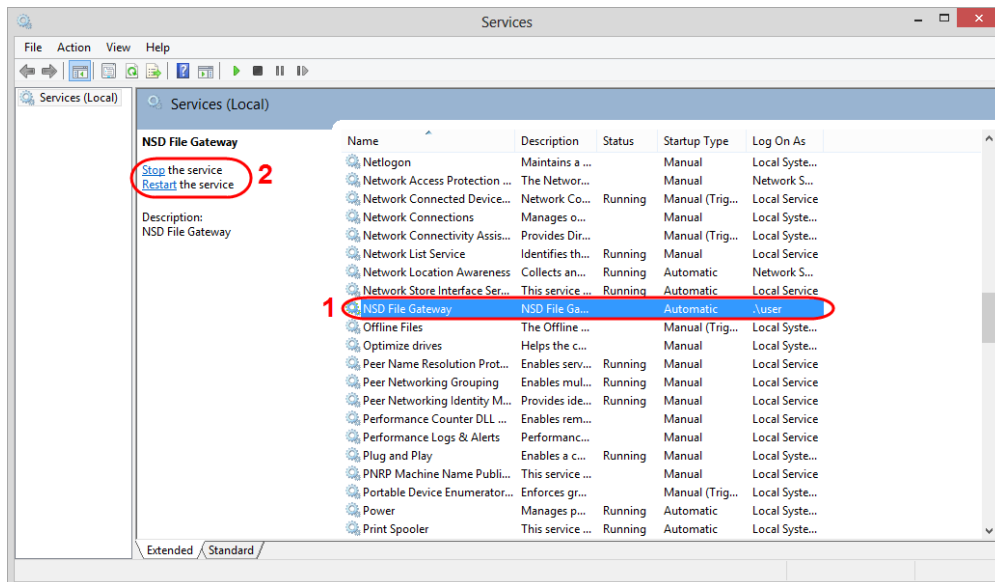


Figure 2 – managing file gateway

Possible errors

If you start the service and encounter an Access Denied error (Fig. 3), this may be for one of the following reasons:

1. cryptographic software is not configured for the user on whose behalf the service is run.

Solution: you need to install and configure the cryptographic software (see [Technical Requirements](#));

When using the **GOST certificate** make sure that the certificates are added to the system repository. To export certificates open **Directory of certificates**, click **Service** and in the menu that opens choose **Export certificates to the System repository**;

2. there is no access to the Internet for user on whose behalf the service starts.

Solution: you must refer to IT specialists to provide access;

3. system drive **C** is absent, the **svc.config** file specifies another non-existent drive to the paths of inbox, outbox and sent message folders.

Solution: open the **svc.config** file, located in the installation folder, and specify correct paths to the inbox, outbox and sent messages and databa. To navigate to the folder with the file **svc.config** you must specify in the Windows Explorer **%LOCALAPPDATA%\NSD.FileGateway**.

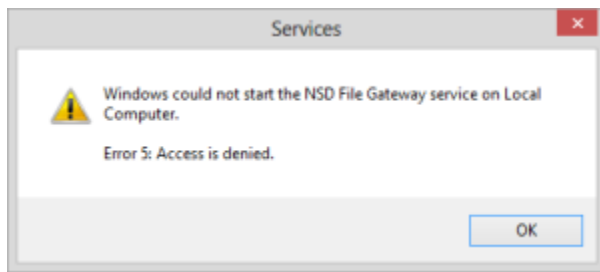


Figure 3 – cryptography error

If the error **Service disabled due to login error** opens at start (Fig. 4), an invalid password was specified for the user, on whose behalf the service is started. To resolve this problem correct password and re-start the service.



Figure 4 – invalid password

[File gateway settings](#)