

Setting up File Gateway



To ensure correct operation of the file gateway the computer must have all the necessary cryptographic software installed (see [Technical requirements](#)).

Additionally, when using the **GOST certificate** you need to add the certificates to the system repository. To do this:

1. open certificate storage;
2. click **the Service** button on the top bar;
3. choose **Export certificates to the System repository** in the menu that opens.

Installing via Console

To install FG:

- Copy the files from the **Redist** folder to the destination folder, eg. C:\FileGatewaySvc\.

On the page:

- [Installing via Console](#)
- [Installing via the Setup Wizard window](#)

- configure the service by the editing the **svc.config** file. To navigate to the file svc.config you need to paste **%LOCALAPPDATA%** into the Windows Explorer and press Enter. The params are described in the [File gateway settings](#) section.
- Specify in the svc.config file the path to the folder with logs (e.g. C:\FileGatewaySvc\Logs):

```
<fileGateway>
...
<logging logDirectory="C:\FileGatewaySvc\Logs\" ... />
...
</fileGateway>
```

- Specify in the svc.config file the path to the database file (e.g. C:\FileGatewaySvc\Data\Database.db3):

```
<fileGateway>
...
<database dbPath="C:\FileGatewaySvc\Data\Database.db3" ... />
...
</fileGateway>
```

- Prepare the credentials of the user on whose behalf the service will run (eg. VC_USER/SVC_USER_PASSWORD). The user must have administrator rights to work correctly with the cryptography. Also the certificates must be configured.
- Allow access to the HTTP protocol. Run the command line as an administrator:

```
netsh http add urlacl url=http://+:8080/ user=SVC_USER
To change the port:
<fileGateway>
...
<webInterface listenUrl="http://localhost:8080" ... />
...
</fileGateway>
```



Skip this step if you do not want to use the web service interface.

- Install the service. Run the command line as an administrator:

```
filegatewaysvc install -username:SVC_USER -password:SVC_USER_PASSWORD -
-autostart
```

- Provide access to the folders:
 - destination folder (. C:\FileGatewaySvc\).
 - log folder (. C:\FileGatewaySvc\Logs\).
 - the folder with database (. C:\FileGatewaySvc\Data\).
- Configure the proxy server (see [Proxy server configuration](#)).
- Run File Gateway (see [Running File Gateway](#)).

The Hardware id will be installed. This app is used to generate hardware code of the computer on the basis of which a licence is granted to use File gateway (see [Licensing](#)).



When you first start the service, it is recommended to run the service via console.

Installing via the Setup Wizard window

Setting up file gateway starts with running the [NSD.FileGateway.Setup file](#). This will open the Setup Wizard window, in which you need to click **Next** (Fig. 1).

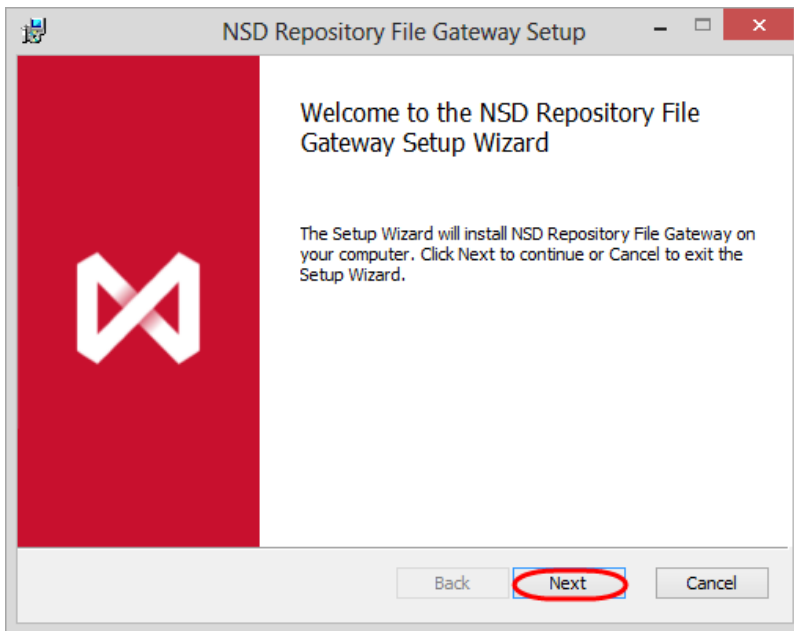


Figure 1 - welcome screen of the file gateway installation wizard

In the next window (Fig. 2.1) choose the service installation folder (by default, `:\Program Files(x86)\NSD.FileGateway\`), using the **Change** button (Fig. 2.2), then click **Next** (Fig. 2.3) to move to the next configuration step.

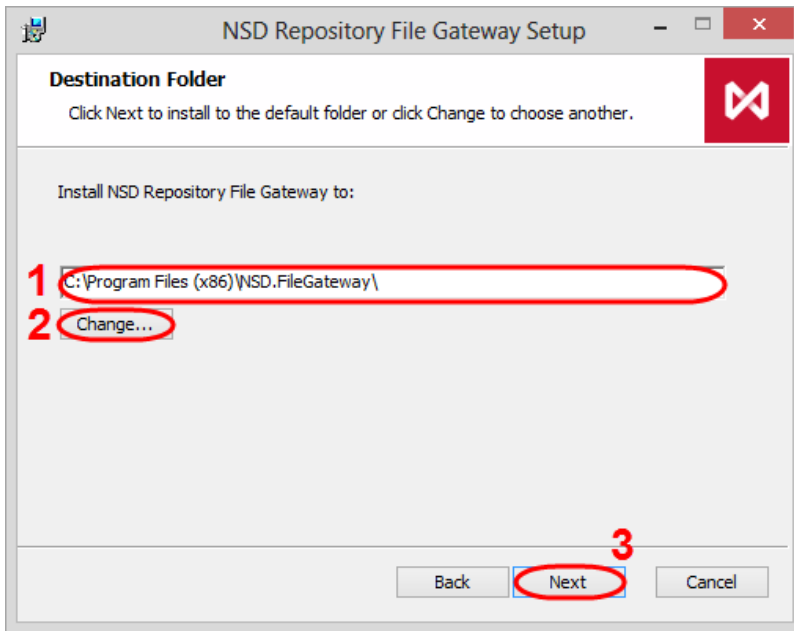


Figure 2 – folder for installing file gateway

A window will open (Fig. 3), where you should specify the the account password of the user, on behalf of which the File Gateway will be launched.

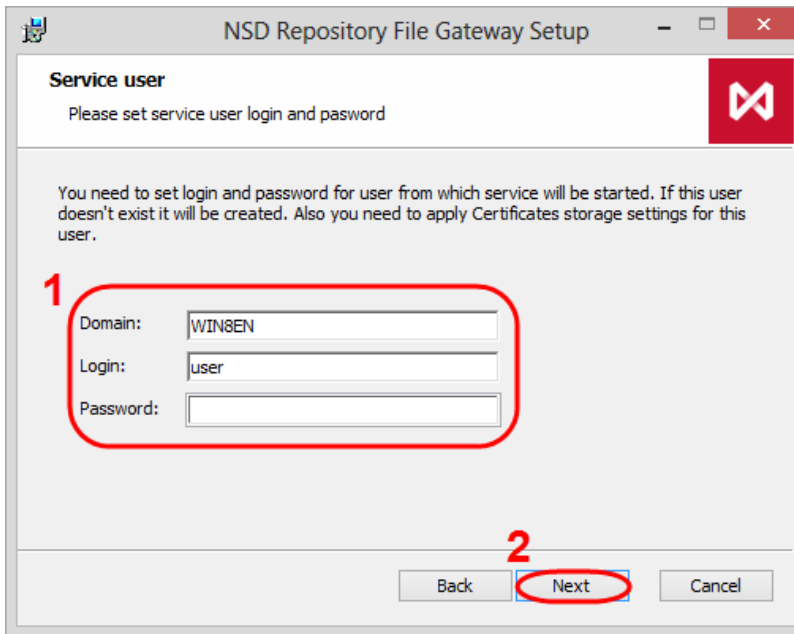


Figure 3 – user account settings

If the password does not belong to the account, an error message will be displayed (Fig. 4).

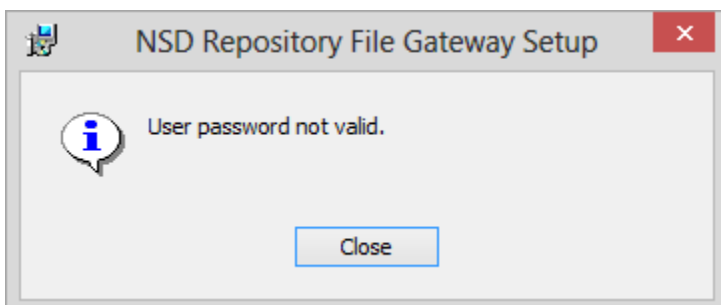


Figure 4 – filling parameters

The installation will continue after correctly filling the fields. If the login and password do not exist, the system will create a new account. Then click Install to install all services and components (Fig. 5).

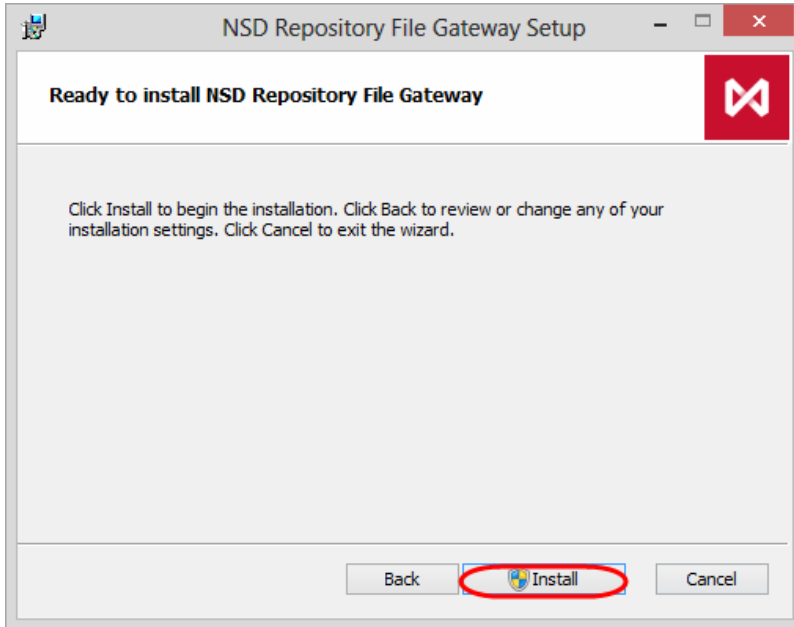


Figure 5 – run the installation of components

This will open a Windows security window (Fig. 6), in which you must click **Yes**.

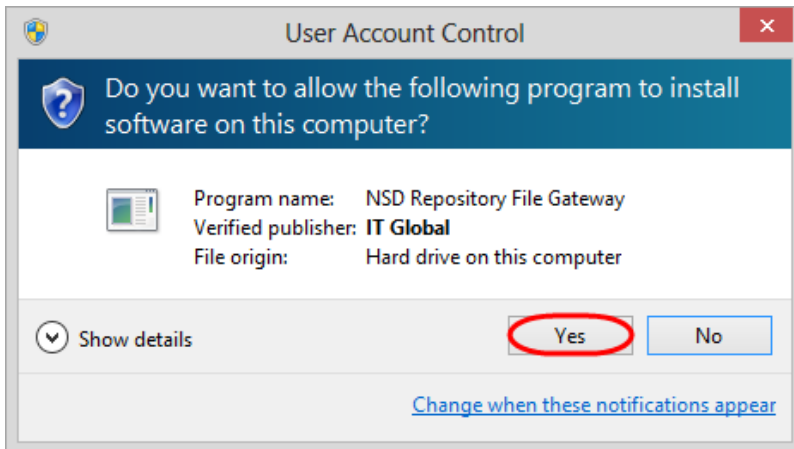


Figure 6 – run the installation of components

The installation process takes a few minutes and will be displayed in the **Status** field (Fig. 7).

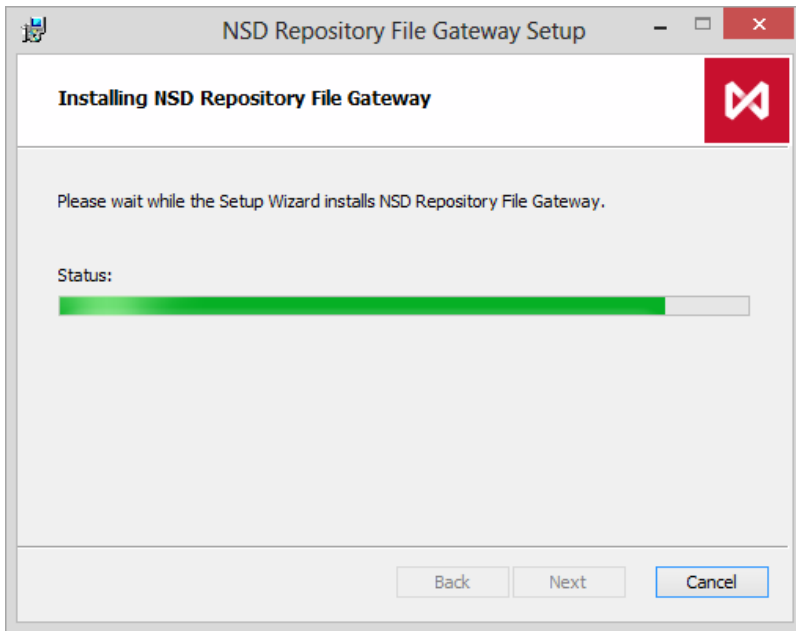


Figure 7 – installation progress

After completing the installation of file gateway an information window will be displayed (Figure 8), where you should click **Finish** to exit the installation wizard.

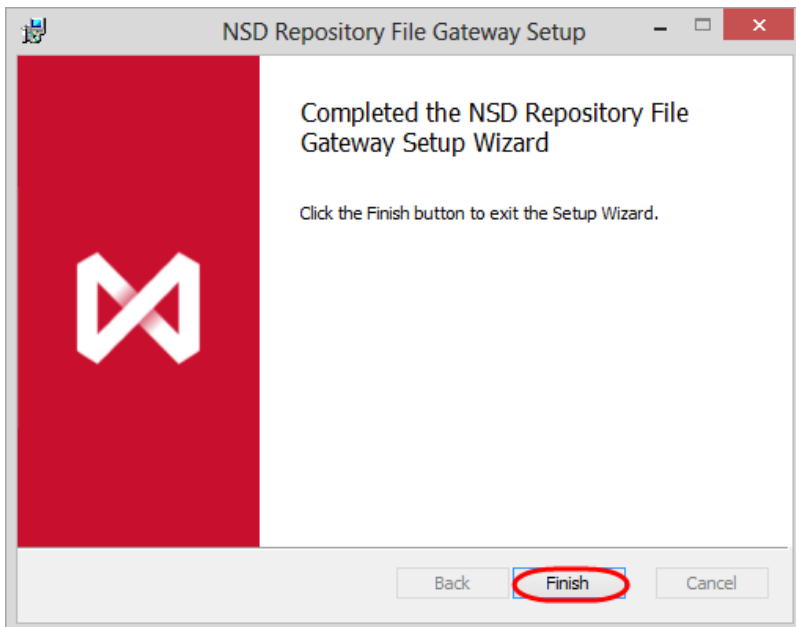


Figure 8 – completing installation

After installation, start the service and perform the initial system configuration.

 For the File Gateway version 7.0.62 and higher **the license is not required**.