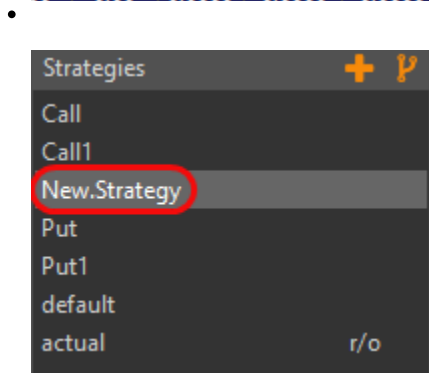
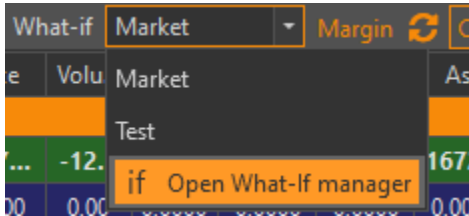


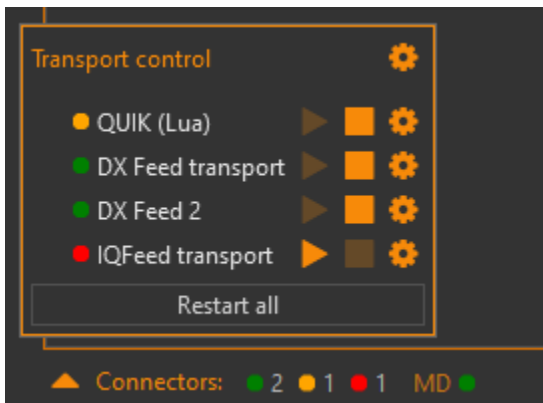
Release Notes

OW.

- :
 -
 -
- What-If



- :
 -
 -



- :
 -
 -
- :
 -
 -
- :
 -
 -
- :
 - **Apply Changes**
 - **Fit To View**

- OW,
- **Clear Strategy**,
- ,
- -
- , -

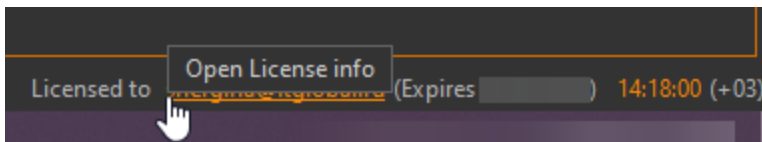
- **QUIK 8.11**
- :
- All
- HardwareId
- -@OptionWorkshopBot

- **Interactive Brokers** Actual
- :
- Data source
- , - ()

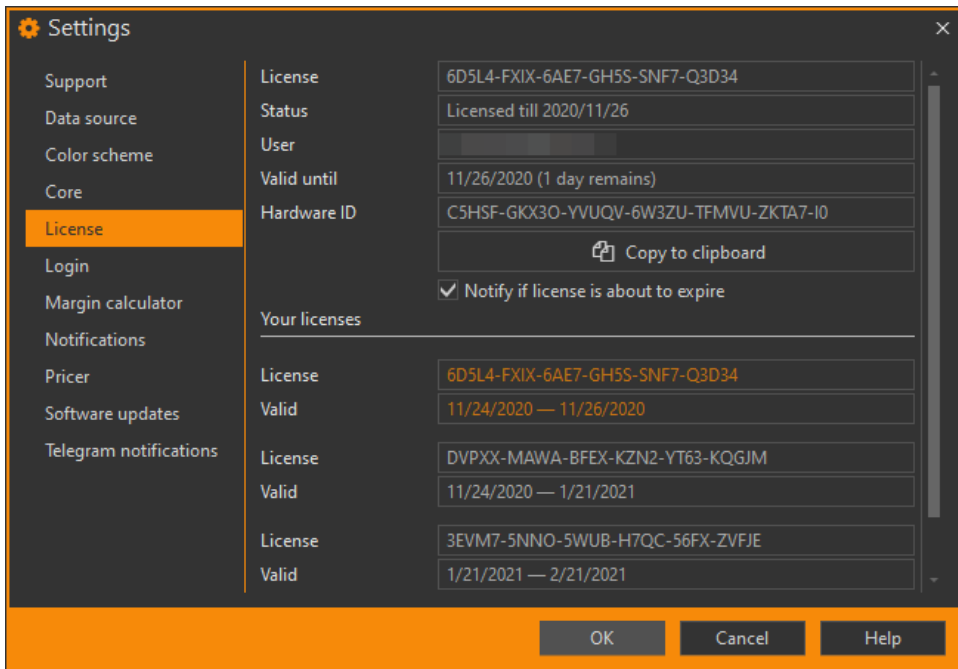
- **TeamViewer-**
- ()

Add connector		Market data routing		Type	Prefix
<input checked="" type="checkbox"/>	<input checked="" type="checkbox"/>	<input checked="" type="checkbox"/>	<input checked="" type="checkbox"/>	QUIK (Lua)	QUIK
<input checked="" type="checkbox"/>	<input checked="" type="checkbox"/>	<input type="checkbox"/>	<input type="checkbox"/>	CQG Continuum	CQG

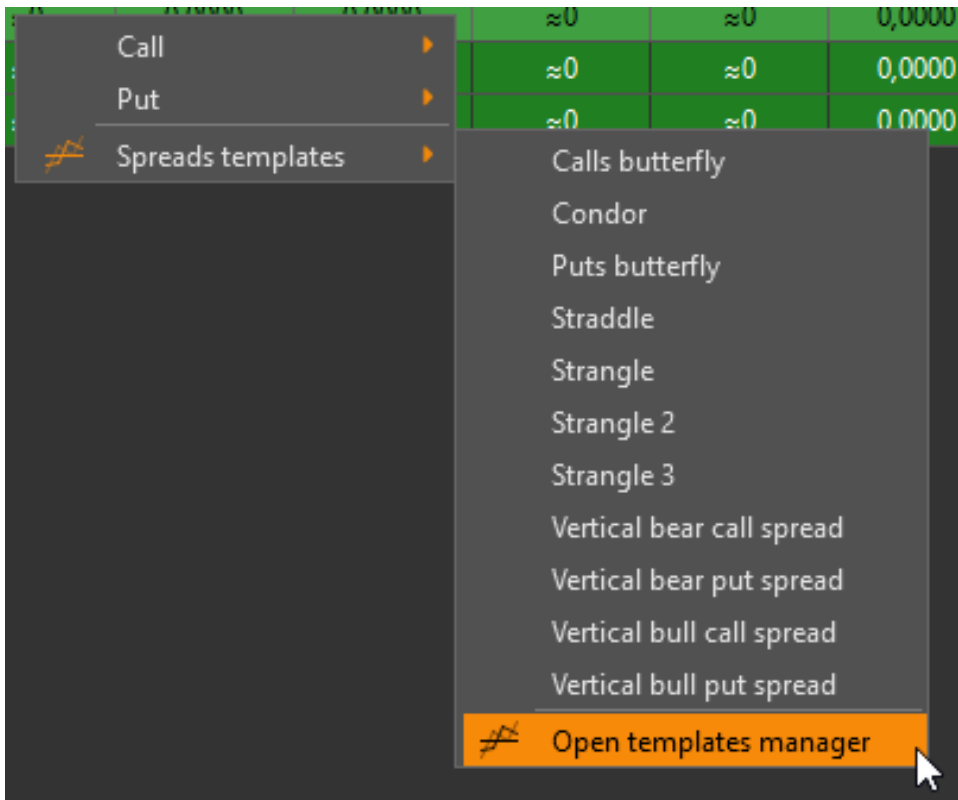
- **what-if**
- License



- License ,



- Open templates manager



- Options desk (P&L)

- P&L (C) P&L (S)
- , price range
- , Windows, Win7
- ,

-
- FORTS

OptionWorkshop. (.), .

Proxy

..

- ()
- -
- -
- (default , actual)
- .
- Disconnected (Offline)

-
- **Hedge to**

- **P&L():**

- **Strategy Templates**

- **DDE-**

- **Select instruments**

- ask, bid, theor price 0

- **Interactive Brokers** 7497

- : SQLCE SQLite

Show positions from.

Telegram

Telegram-

Vola

- CGate
- P&L
- , -
- , csv-
- ATM

FOS

FOS (Futures Orders Stairs).

, , , , ,

:

- 1.
- 2.
- 3.
- 4.
- 5.
6. () , .

.

Telegram Bot

telegram-.

CQG

CQG . , , .

.

TeamViewer

TeamViewer, . 14- .

- () , .
- .
- .
- Money limits , . , . .
- .
- .
- 75 100 .
- - , () .
- .
- - .
- .

- - QUIK.
- price range .
- CQG.
- - .
- . Windows.

- Telegram- ;
- ;
- ;
- ;
- -;

- (,) Ctrl Enter, -;
- Alt+Enter Apply changes;
- LUA (QUIK) .

- - ;
- ;
- CQGCAadapter (,) , ;
- - ;
- cgate;
- cgate-;
- (log);
- csv- , Excel;
- , ;
- ;
- ();
- (modify) ;
- Set price;
- ;

(Positions):

- ;
- **Mnns** (Moneyness), : , , ;
- **Risk**, , , .

(Charts):

- ;
- P&L .

(Option Desk) bid ask, / .

- .

.

“OptionWorkshop: ”, .

:

- / .
- Set price () .
- : csv- .

OptionWorkshop, .

:

- QUIK Receive marketdata (). QUIK-, .
- .
- .
- **Set price** () .
- (Positions) **Orders** (). , . (Orders manager), .
- **Notes** (Positions), .
- , /, **Rename**.
- .

:

- - .
- P&L (Money) .
- (Option desk) .
- , .
- .
- , .
- Total (Positions). QUIK.
- .
- « » QUIK.
- .
- , IB.
- QUIK.

.

:

-
-
-
-
-
- What-if
- " "
-

:

-
-
-
-
-
-
-

16.12.1307 (Pricing models). (Black, Black-Scholes, Cox-Ross-Rubinstein) .
 , (Volatility skew) , .

16.11.1268 . 30: , /, .. , !

:

- :,, (, , .)
-

:

- (Table settings).
- OptionWorkshop.
- (Orders).
-
- (Strategy lines setup).
- (Positions manager).
- what-if
- Spread Desk ATM-
-

:

- :
-
- Shift.
- Select all - , Deselect all - , .
-
-
-
-
-
-

- OptionWorkshop ., P&L, P&L.

:

- * -
-
-
- , what-if .
- -
- : actual.
- FOS.
-
-

- ,
- ,
- , DDE – **Update period**;
- OptionWorkshop **Ctrl+Tab**.

- .
- .
- .
- .
- .
- .
- .
- DDE .

- .
- what-if .
- [Getting Started](#) .
- .
- .

- **Show Options Total** .

- **Price range** .
- /.
- .
- **Money limits.**
- .
- .

- **(Price range)** .
- , 30 %.
- CQG Cintinum.
- :
- Last price – ();
- P&L (M) – / , ();
- Bid/Offer – , ().

- AmmyAdmin Teamviewer.
- , , .

- excel.
- IB TWS.

- –
- –

- .
- QUIK LUA .
- .
- .
- .

- Interactive Brokers.
- Interactive Brokers.

:

- .
- .
- , CBOE VIX (Interactive Brokers).
- CQG IB TWS.
- .

:

- , , 5, .
- , , cgate .
- , - default.
- - ().

:

- cgate %appdata%.

:

- ().
- Hot fix Plaza 2.

:

- .
- Last Price .
- .
- .
- (.
- .
- , .
- .

:

- FOS, -.
- .
- QL.
- .
- .
- CQG Continuum.
- LUA QL.
- QL.
- .
- .
- .
- QL.
- .
- .
- .
- .
- .
- .
- .
- .
- QL.
- .
- .
- .

:

- .
- .
- .
- .

:

- .
- .
- .